


# LGMG

## AR65J

### ARTICULATING BOOM LIFT

- 
- 573 lbs/772 lbs (260/350kg) dual-capacity design, 8' (2.44m) triple entry platform.
  - Oscillating, full-time floating axels allow the wheels to grip to the ground when driving on hard, uneven terrain.
  - Integrated four-wheel-drive system provides strong power, smooth transmission, and 45% gradeability.
  - Equipped with three steering modes: four-wheel steering, crab steering, and front-wheel steering, and equipped with one-touch wheel alignment.
  - Proportional lift and drive controls deliver smoother maneuvering, precise positioning and comfortable operation.



# LGMG Diesel - Articulating Boom Lift

## SPECIFICATIONS

MODELS	AR65J ( AR20J )	
Measurements	Imperial	Metric
Work Height Max.	70'10"	21.58m
Platform Height Max.	64'3"	19.58m
Horizontal Outreach	40'7"	12.37m
Up and Over Height	26'10"	8.19m
Platform Length	8'	2.44m
Platform Width	2'11"	0.9m
<b>A</b> Stowed Length	30'11"	9.42m
Length-Transport (jib tucked)	25'	7.63m
<b>B</b> Overall Width	8'2"	2.5m
<b>C</b> Stowed Height	8'1"	2.46m
Height-Transport	9'9"	2.96m
<b>D</b> Wheelbase	8'3"	2.51m
<b>E</b> Ground Clearance	1'4"	0.4m

PRODUCTIVITY		
Max. Platform Occupancy	2(unrestricted) / 3(restricted)	
Platform Capacity	573/772 lbs	260/350kg
Turntable Rotation	360°	360°
Drive Speed-Stowed	3.1mph	5km/h
Drive Speed-Raised	0.5mph	0.8km/h
Gradeability	45%	45%
Max. Wind Speed	28mph	12.5m/s
Turning Radius-Inside	6'3"	1.9m
Turning Radius-Outside	12'10"	3.9m
Max.Slope	4°/4°	4°/4°
Tires Type	RT Foam-filled	
Tires Models	355/55D625	
Ground Pressure, Tyres	75.9 psi	523.12 kPa

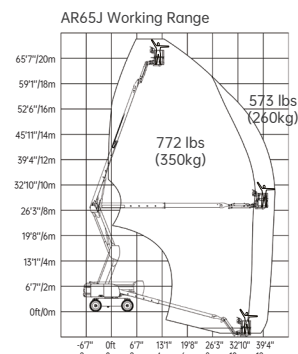
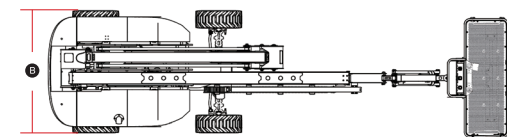
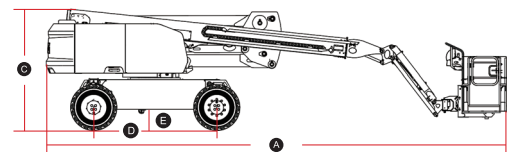
POWER		
Power Source	Kubota 36kW/48.3hp	
Fuel Tank Capacity	17.2gal	65L

HYDRAULIC SYSTEM		
Hydraulic Oil Volume	30.4gal	115L

WEIGHT		
Machine Weight	21,715 lbs	9,850kg

STANDARD FEATURES	
Proportional control	Emergency stop device
Horn/Hour meter	Auto-leveling platform
Full-height drive	Anti-collision protection
Flashing beacons	Over tilt protection system
Cylinder bellows	Platform control cover
Oscillating axle	Overload sensing system
Platform tool box	Intelligent diagnostic system
Telematics connector	RT Foam-filled tires

OPTIONAL	
Telematics	Solid tires
AC power to platform	Solid non-marking tires
Hydraulic generator kit	Foam-filled non-marking tires
Cold weather package	Half-height mesh platform
3.5kw Hydraulic generator	Biodegradable hydraulic oil
Auxiliary rail	



Please contact LGMG or a local dealer for more details.

LGMG reserves the right to change technical data without prior notice. All photos and pictures in this brochure are for promotional purposes only.

## LGMG North America Inc.

Address: 4105 Live Oak Drive, Suite 100, The Colony, Texas 75056 United States  
Email: [sales@lmgna.com](mailto:sales@lmgna.com) Tel: +1 833 288 5464

[www.lmgna.com](http://www.lmgna.com)



RELIABILITY IN ACTION