

# LGMG

## T65J-H

### TELESCOPIC BOOM LIFT

LGMG has a complete line of engine-driven, high-capacity telescopic boom aerial work platforms, with the maximum working height ranging from 71' 6" to 97' 9" (21.8/29.8m). With a double capacity design of 992/661lbs (450/300kg), the machine can allow up to 3 people to work at the same time both indoors and outdoors, which greatly improves work efficiency.



# LGMG Diesel Telescopic Boom Lift

## SPECIFICATIONS

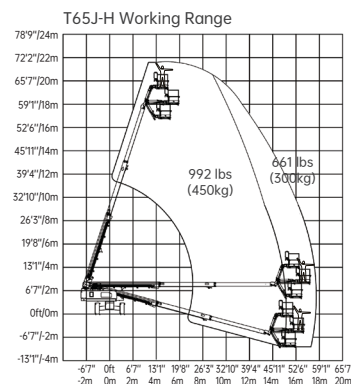
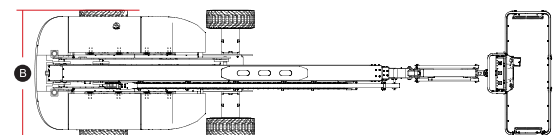
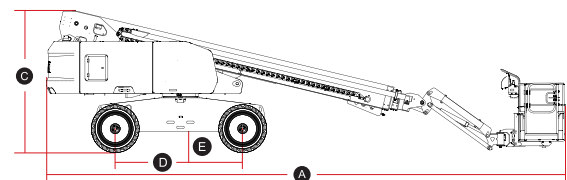
MODELS	T65J-H ( T20J-H )	
Measurements	Imperial	Metric
Work Height Max.	71'6"	21.8m
Platform Height Max.	65'	19.8m
Horizontal Outreach Max.	54'6"	16.6m
Platform Length	8'	2.44m
Platform Width	2'11"	0.9m
<b>A</b> Stowed Length	33'6"	10.2m
Length-Transport (jib tucked)	27'3"	8.3m
<b>B</b> Overall Width	8'2"	2.49m
<b>C</b> Stowed Height	9'1"	2.78m
Height-Transport	9'6"	2.89m
<b>D</b> Wheelbase	8'3"	2.51m
<b>E</b> Ground Clearance	1'4"	0.4m
PRODUCTIVITY		
Max. Platform Occupants	2 (unrestricted) / 3 (restricted)	
Platform Capacity (unrestricted)	661 lbs	300kg
Platform Capacity (restricted)	992 lbs	450kg
Turntable Rotation	360°Continuous	
Drive Speed-Stowed	3mph	4.8km/h
Drive Speed-Raised	0.5mph	0.8km/h
Gradeability	45%	45%
Max. Wind Speed	28mph	12.5m/s
Turning Radius-Inside	8'2"	2.5m
Turning Radius-Outside	18'	5.5m
Max.Slope	5°/5°	5°/5°
Tire Type	RT Foam-filled	
Tire Size	355/55D625	355/55D625
Ground Pressure, Tyres	97.2 psi	670 kPa
POWER		
Power	Kubota 36kW/48.3hp Deutz 36.4kw/48.8hp	
Fuel Tank Capacity	26.4gal	100L
HYDRAULIC SYSTEM		
Hydraulic Oil Volume	47.5gal	180L
WEIGHT		
Machine Weight	26,455 lbs	12,000kg

## STANDARD FEATURES

Proportional control	Emergency stop button
Horn/Hour meter	Auto-leveling platform
Platform control cover	Anti-collision protection
Flashing beacons	Over-tilt protection system
Cylinder bellows	Overload sensing system
Platform tool box	Intelligent diagnostic system
Oscillating axle	Descent alarm with flashing beacon
Telematics connector	RT Foam-filled tires

## OPTIONAL

Telematics	Solid tires
Glazier kit	Solid non-marking tires
Auxiliary rail	Foam-filled non-marking tires
Hydraulic generator kit	Half-height mesh platform
Hydraulic oil radiator	7.5kw Hydraulic generator
Cold weather package	Biodegradable hydraulic oil
AC power to platform	



Please contact LGMG or a local dealer for more details.

LGMG reserves the right to change technical data without prior notice. All photos and pictures in this brochure are for promotional purposes only.

## LGMG North America Inc.

Address: 4105 Live Oak Drive, Suite 100, The Colony, Texas 75056 United States  
Email: sales@lmgna.com Tel: +1 833 288 5464

www.lmgna.com



RELIABILITY IN ACTION